

# BENOIT SYSTEMES



## LIGHT DRIVE 2.1



[WWW.BENOITSYSTEMES.COM](http://WWW.BENOITSYSTEMES.COM)







# LIGHT DRIVE 2.1

Designed for all manual wheelchair users, whether occasional, temporary or permanent, LIGHT DRIVE 2.1 turns manual wheelchair into ultralight and high performance powerchair in seconds.

Benoit Systemes has been fitting power add-ons on manual wheelchairs in France since 1994. LIGHT DRIVE 2.1 offers you the possibility to effortlessly add power to your manual wheelchair.



INSTANT  
INSTALLATION

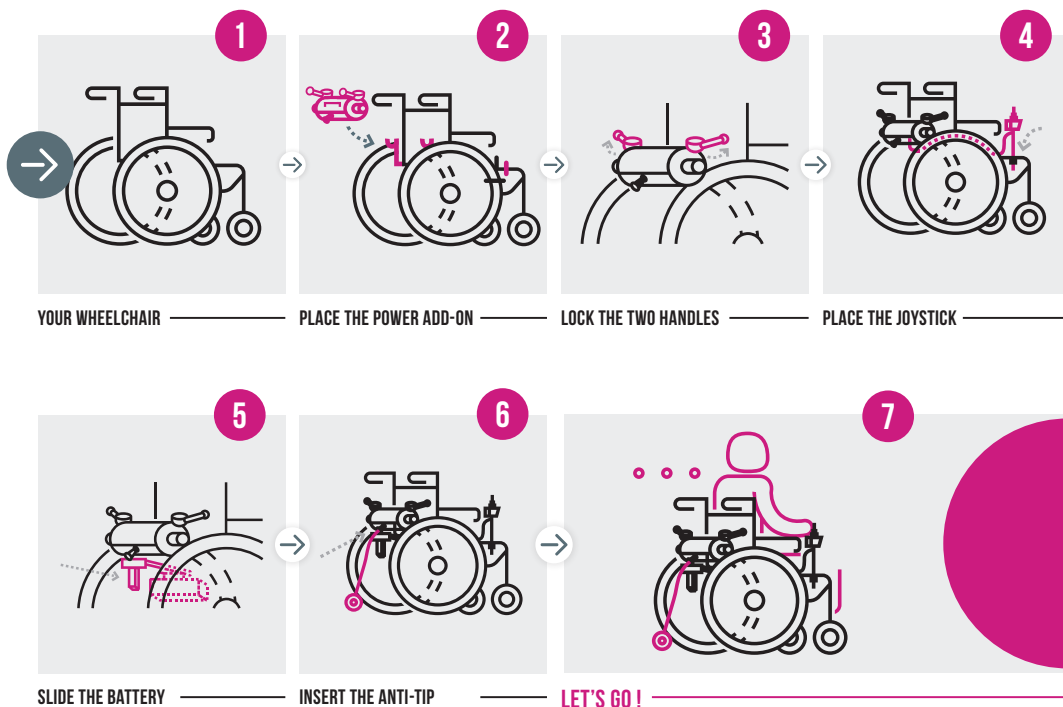


DRIVE WITH  
A JOYSTICK





# HOW DOES IT WORK ?



Disengage the power add-on in one movement and feel free to self-propel.

*Jean-Claude*  
User since 2016 - diagnosed  
with multiple sclerosis in 2013.

“ My Light Drive helps me all year around to go shopping with my wife, to stroll through shopping centres and, on fine days, to wander around car boot sales and markets. Since I've had my Light Drive, I've become independent. I no longer need somebody with me all the time.





**LIGHT DRIVE 2.1**  
Ready for new  
adventures ?





# ADVANTAGES OF LIGHT DRIVE 2.1



LIGHTWEIGHT  
AND EASILY  
TRANSPORTABLE



ADAPTS TO ALL  
WHEELCHAIRS\*

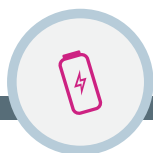
\*seat width from 32 cm



INSTANT  
INSTALLATION



INDOORS/  
OUTDOORS



AUTONOMY  
UP TO 15 KM



CAN BE  
TRANSPORTED  
BY PLANE



MADE  
IN FRANCE



REMOVABLE



COLOUR OF  
YOUR CHOICE

\*12 Ah battery complies with IATA regulation.

## Light Drive 2.1

is lightweight, removable and  
easily transportable.



## NEW 2021



More ergonomic  
clutch system



New extension  
of the joystick



New  
anti-tip



Extended colour  
range

## NEW RANGE OF COLOUR



### CLASSICS

- BLACK
- WHITE
- BLUE
- RED
- KHAKI

### METALLICS

- MIDNIGHT BLUE
- GREY
- SILVER
- COPPER
- CHAMPAGNE GOLD

### TRENDY

- SKY BLUE
- PINK
- GREEN
- YELLOW
- ORANGE



# LIGHT DRIVE MINI 2.1



## A smaller version for children

Light Drive Mini 2.1 can be refitted as the child grows allowing to change wheelchair without changing the power add-on.

Wheelchair equipped with a Light Drive maintains its original manoeuvrability and foldability, it is also easy to transport in any vehicle.

Thanks to Light Drive Mini 2.1, your child will be able to ride easily on all kinds of terrain (steep slopes, grass, gravel).

Reverse gear makes the pedestrian pavement and small step more accessible.



# LIGHT DRIVE PLUS 2.1



Light Drive Plus 2.1 has been designed for users of wheelchairs with a weight above 120 kg.

Equipped with four 130 W motors, it will allow you to enjoy the advantages of lightweight power add-ons.

It can be fitted on all foldable wheelchairs providing you up to 20 km of autonomy, thanks to 18 Ah Lithium battery.



# TECHNICAL DETAILS

Our power add-ons can be fitted on most of wheelchairs starting from **32cm seat width and 40 cm between the wheels**.

	Maximum user weight	Power add-on weight
Light Drive 2.1	120 kg	8,8 kg
Light Drive Mini 2.1	120 kg	8,8 kg
Light Drive Plus 2.1	240 kg	16 kg

Max speed	10 km/h programmable
Motor	2 x 130W motors with brakes
Motor Light Drive Plus 2.1	4 x 130W motors with brakes
Climbing ability	6° (11%)
Manufacturer's warranty	24 months for the power add-on and the battery



**Compatible wheelchairs:** a compatibility guide is available to know the models of wheelchairs on which Light Drive 2.1 can be installed, in compliance with general requirement for safety and performance stated in the European Regulation related to medical devices. [Find out more](#)



**12 AH LITHIUM BATTERY COMPLIES WITH APPLICABLE IATA REGULATIONS FOR AIR TRAVEL.**

Model	Weight	Range
— Lithium-ion battery	— 3,85 kg	— up to 15 km







YOUR LOCAL DEALER

REQUEST YOUR **FREE TRIAL !**

📍 7 Rue du Pont,  
21450 Billy-Lès-Chanceaux, FRANCE  
☎ (+33) 3 80 96 51 25  
@ [export@benoitssystemes.com](mailto:export@benoitssystemes.com)

CE Light Drive 2.1 complies with the European  
Regulation 2017/745 on Medical Devices (Class I).