

BENOIT SYSTEMES



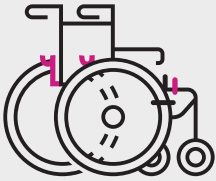
LIGHT DRIVE²

USER MANUAL



Follow us!

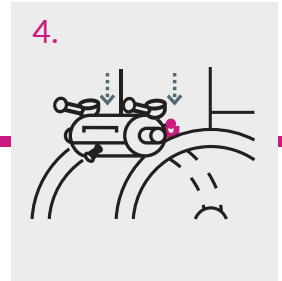
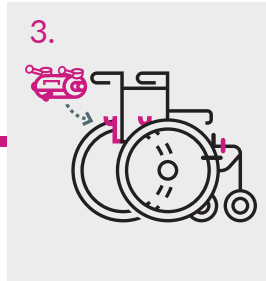
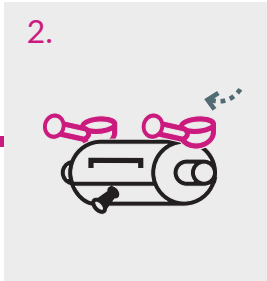
WWW.BENOITSYSTEMES.COM



Your wheelchair has been fitted with **hook bars and hooks** that will allow you to set up your power add-on very quickly.
A **controller bracket** at the front of your chair will hold the joystick.

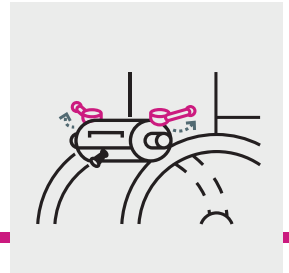
1 SETTING UP THE POWER ADD-ON

1. Put the brakes on the wheelchair to make the setting up easier.
2. Point the two clutch handles towards the rear (neutral position).
3. Hold the power add-on with its upper handle and place the axles on the hooks.
4. Make sure that the axles are positioned correctly.



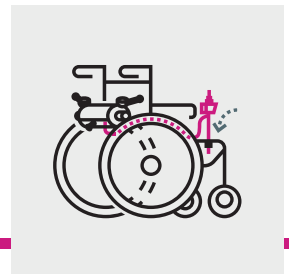
2 LOCKING THE HANDLES

1. Extend both telescopic handles to gain more force.
2. Engage both handles always beginning with the right-hand side.
3. Push back the telescopic handles.



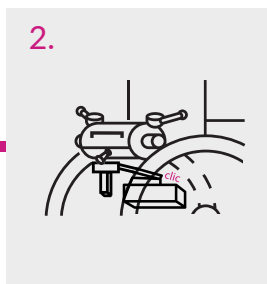
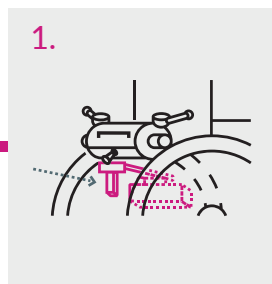
3 PLACING THE JOYSTICK

1. Place the joystick in the controller bracket at the front of the chair.
2. Put the joystick cable alongside the seat to avoid friction on the wheel.
3. Adjust the joystick height through the stop.



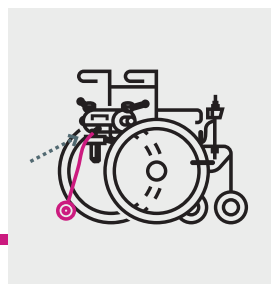
4 SETTING UP THE BATTERY

1. Place the battery rack on the battery slider on the power add-on.
2. Firmly push the battery rack until you hear the connectors slot into each other.



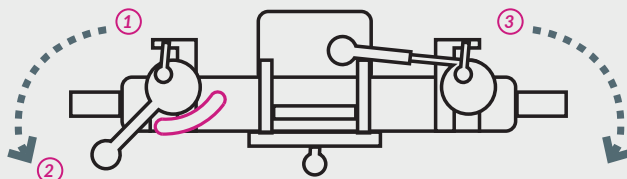
5 SETTING UP THE ANTI TIP

Insert the anti-tip into the rear handle on the power add-on (wheel bottom facing).



EXTRA FEATURE

Simple shift of the clutch handles is enough to disengage the power add-on and get your usual manual wheelchair back.



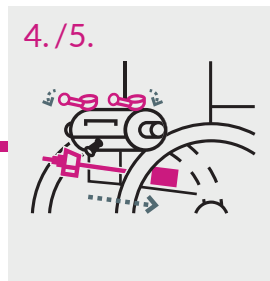
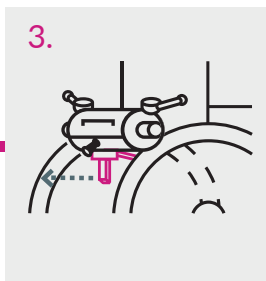
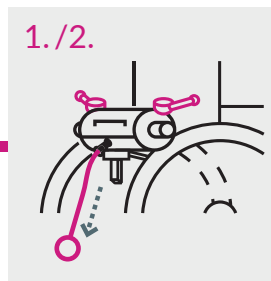
- ① Disengage the left handle and turn it slightly to the right.
- ② Wedge the handle in place on the *anti-swing stop*.
- ③ Disengage the right handle and place it all the way against the backrest.

6 REMOVING THE POWER ADD-ON

Put the brakes on the wheelchair to make the removal easier.

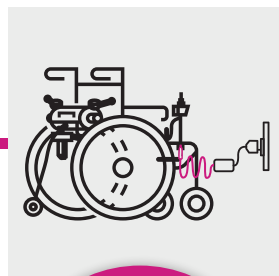
1. Keep the handles engaged.
2. Remove the anti-tip.
3. Unlock the battery with the help of the rack locking mechanism and pull it towards rear.
4. Remove the joystick and insert it in the storage bracket on the power add-on and store them in the designated position at the rear of the engine.
5. Place the handles in neutral position.

Lift the power add-on by grabbing the upper handle. Axles should come off the hooks.

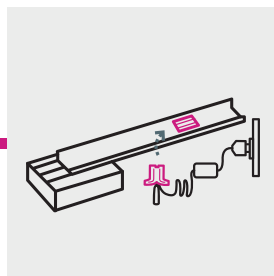


7 RECHARGING THE BATTERY

If the battery stays on the wheelchair,
connect the charger to the joystick



If the battery is removed,
connect the charger to the red connector
on the battery



Then plug the
charger into the
power supply.

READ THE SERVICE MANUAL

for driving, security and
maintenance
instructions



📍 7 Rue du Pont, 21450 Billy Les Chanceaux FRANCE
☎ (+33) 3 80 96 51 25 | @ contact@benoitssystemes.com

WWW.BENOITSYSTEMES.COM